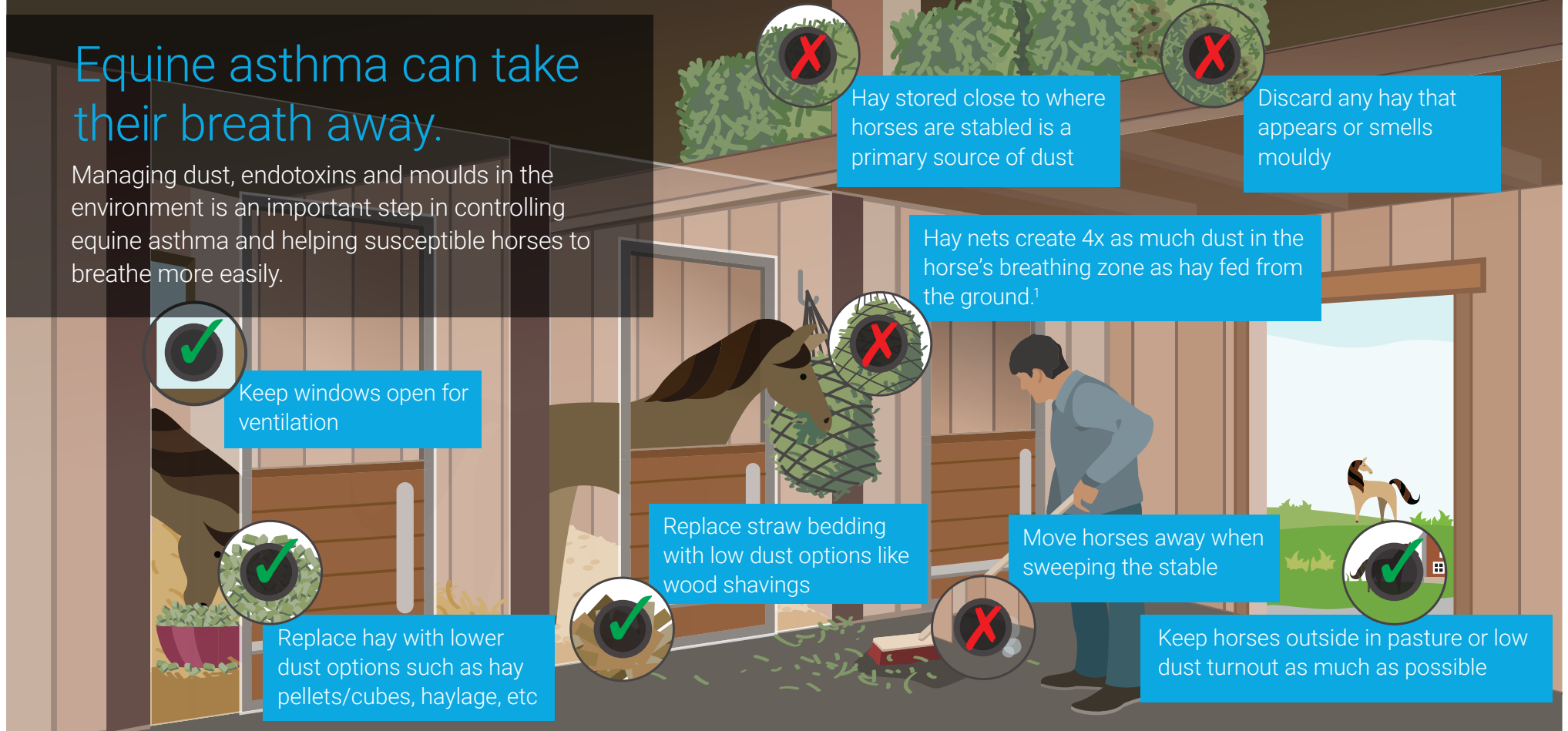


Equine asthma can take their breath away.

Managing dust, endotoxins and moulds in the environment is an important step in controlling equine asthma and helping susceptible horses to breathe more easily.



Help make the environment favorable for horses with asthma

Things "TO DO":

- ✓ keep horses with asthma outside as much as possible (except horses with SPAEA)
- ✓ move horses outside to clean the stable and sweep
- ✓ use low dust bedding options (shavings, cardboard and rubber mats)
- ✓ keep windows and doors open to improve air flow and ventilation
- ✓ feed hay on the ground and feed hay pellets, cubes or haylage for lower dust options
- ✓ discard of mouldy hay
- ✓ find places to store hay so it is not in close proximity to stabled horses
- ✓ keep stable as clean and free of dust as possible

Things "NOT TO DO":

- ✗ do not feed mouldy or dusty hay
- ✗ do not use high dust bedding like straw
- ✗ do not store hay or straw in close proximity to horses
- ✗ do not confine horses in poorly ventilated areas
- ✗ do not keep affected horses indoors for long periods*
- ✗ do not keep the stable windows closed
- ✗ do not sweep or use leaf blower when horses are in the stable

* except for horses with summer pasture associated equine asthma, which will benefit from housing in dust free and well ventilated stables.



1. Ivester, K.M., Couétil, L.L., Moore, G.E., Zimmerman, N.J. and Raskin, R.E., 2014. Environmental exposures and airway inflammation in young thoroughbred horses. Journal of veterinary internal medicine, 28(3), pp.918-924.